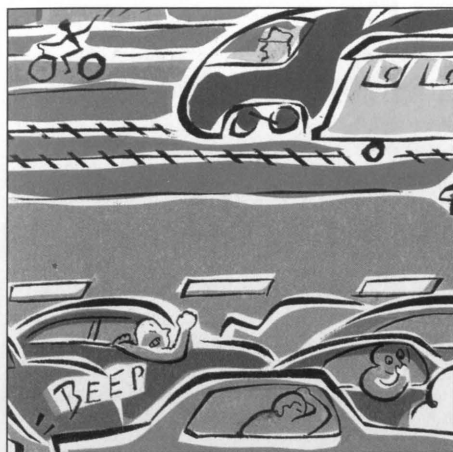


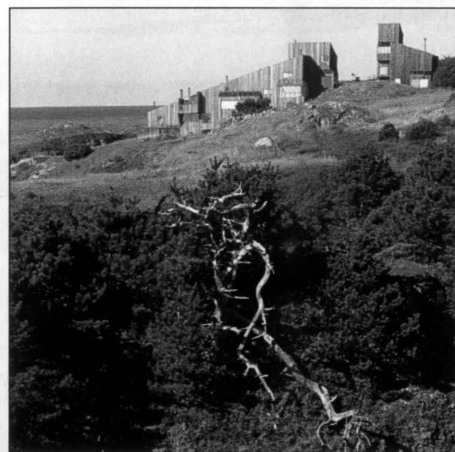
LANDSCAPE ARCHITECTURE



20



42



60

COVER STORY

Professional turf

34

Finding Common Ground

by Kevin Powell

Landscape architects reach par with architects, planners

42

Three Collaborations

by Jory Johnson and Michael Leccese

Partnerships with artists yield innovative installations

48

LA Forum

by J. William Thompson

Striving for equality in the collaborative process

120

Prospect

by Jim Burns

A pioneer of community participation speaks out

60

PROFILE

by J. William Thompson

Lawrence Halprin's democratic design vision

TECHNIQUE & PRACTICE

75

Brave New Landscape

by Kim Sorvig

New and emerging construction materials

DEPARTMENTS

14 Letters

20 News

78 The Design Network

81

118

Buyer's Guide

Reader Service Index

ON THE COVER: Lawrence Halprin on California's Alcatraz Island. Photograph by Alan Ross.

Landscape Architecture (ISSN 0023-8031) is published monthly by the American Society of Landscape Architects, copyright 1992. Second-class postage paid at Washington, DC, and additional mailing offices. SUBSCRIPTIONS: U.S.: \$42/year, \$80/2 years. Canada and foreign surface mail: \$70/year, \$132/2 years. Airmail: \$125/year, \$238/2 years. Students: \$32/year. Single copies \$7. Send U.S. funds to Landscape Architecture, 4401 Connecticut Ave., NW, 5th Floor, Washington, DC 20008-2302. Telephone (202) 686-2752. ASLA members: \$21 of dues is designated for magazine subscription; please direct your inquiries to the Membership Department.

POSTMASTER: Send address changes to *Landscape Architecture*, 4401 Connecticut Ave., NW, 5th Floor, Washington, DC 20008-2302.